


Share This: 

PROTECTING THE WATER, WILDLIFE AND OUTDOOR HERITAGE OF THE CROWN OF THE CONTINENT.



To Read Back Issues of This Newsletter Click [Here](#)

\$9.4 Million Secures B.C. Mining and Energy Ban in Headwaters

February 18, 2011

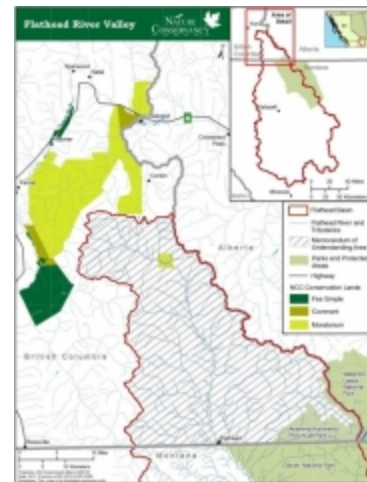
Dear [member_name_first]:

You've read the headlines in the local papers: the Nature Conservancy of Canada (NCC) and The Nature Conservancy (TNC-US) have committed \$9.4 million to the government of British Columbia to conclude the historic B.C. - Montana MOU signed in February of last year. As part of the deal, the B.C. will enact legislation banning the extraction of minerals, oil, gas, and coal within the watershed.

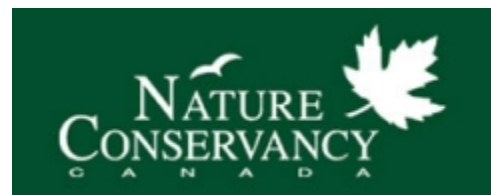
From our point of view, this monetary transaction appears to *seal the deal*. Last year's MOU was a pencil check against mining and energy development in the headwaters. This transaction and the promised legislation makes it a check with a **permanent marker**.

Thank you! NCC, TNC, Senator Baucus, Governor Schweitzer, Premier Campbell, Senator Tester, Secretary Salazar, Canadian Ambassador Doer, Canadian Minister for the Environment Kent, and our friends and allies in Canada and the U.S. who pushed this issue over the finish line!

Campaign Goals Remain!



The map above shows the area of the North Fork Flathead River affected by the B.C. mining and energy ban. [The Nature Conservancy of Canada](#) and [The Nature Conservancy \(US\)](#) have committed \$9.4 million to secure this ban in legislation. (Click on map or [here](#) to see larger image.)



This money transfer will settle the mining and energy extraction issue in B.C. However, it represents [just one of several campaign goals](#) to permanently protect the Transboundary Flathead. *Headwaters Montana* remains focused on the complete conservation of the watershed, not yet in hand.

For Canadians, the B.C. portion of the watershed logging, trophy hunting for grizzly bears, rock quarrying and increased road access continue to pose risks. Local Canadians, by a 60-65 percent margin, want to see Waterton Lakes National Park 'completed'. They also want the wildlife management area (WMA) from the border to Banff National Park along the Rockies re-established.

South of the border, *Headwaters Montana* continues to work for full protection of the Whitefish Range, west of the North Fork Flathead River. (*More on this in future issues!*)

How the Press Reported It

The local papers got the story mostly right, but key points need clarification.

- The money hasn't been delivered yet; the conservancies made a commitment to the province.



The North Fork Flathead River is now off-limits to mining and energy projects north of the border. Americans must now protect the Montana side by withdrawing all minerals from the Whitefish Range west of the river. Senators Baucus and Tester have reintroduced the "[North Fork Watershed Protection Act of 2011](#)". Passing this legislation is the next step in the process to protect our water and wildlife. (Photo: Garth Lenz/iLCP)

The Nature Conservancy 
Protecting nature. Preserving life.™

Here's a listing of the published stories/press releases on this development:

- [Daily Inter Lake](#) editorial (excellent!)
- [Hungry Horse News](#)
- [Globe and Mail](#) (Good article)
- [Vancouver Sun](#)
- [Missoulian](#)
- [Flathead Beacon](#)
- [Calgary Herald](#)
- [Senators Baucus and Tester](#)
- [Premier Gordon Campbell](#)
- [The Nature Conservancy of Canada](#) (NCC)

~We Thought You'd Like to Know!

Riis/iLCP)



*The work's not over yet.
We need to "Complete the Park" and
protect the Whitefish Range south of
the border.*

Office: 545 Holt Drive, Bigfork, MT 59911 | Invoices, etc: PO Box 4310, Whitefish, MT 59937
info@headwatersmontana.org | www.headwatersmontana.org

This email was sent to .
To ensure that you continue receiving our emails, please add us to your address book or safe list.

[manage](#) your preferences | [opt out](#) using **TrueRemove**®

Got this as a forward? [Sign up](#) to receive our future emails.

